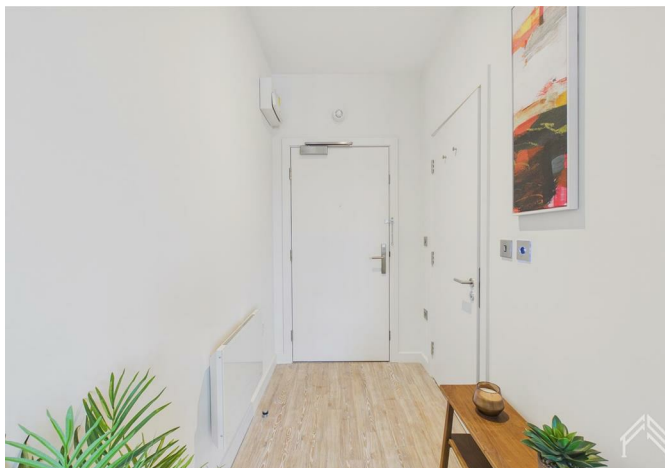




7654555 Clarence Street, Kingston Upon Thames, KT1 1ST  
£1,400 Per month





7654555 Clarence Street, Kingston Upon Thames, KT1 1ST

**£1,400 Per month**

A brand new apartment in the heart of central Kingston, offering one of the most impressive amenity packages available in London residential living today.

Residents enjoy access to a 24-hour concierge, rooftop terrace, cinema room, residents' gym, soundproofed podcasting studio, games room with PS5, co-working lounge and private dining room, all included within one simple monthly payment covering rent, bills and council tax.

Located just 30 minutes from London Waterloo, this is city living without compromise.

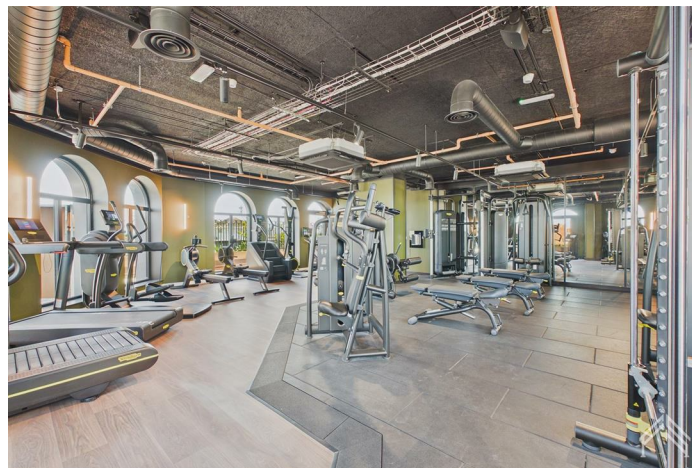
Exclusive move-in incentives are available, and zero deposit is required. Early viewing is strongly recommended.

A mandatory fee of £225 per month applies for utilities and council tax. This home benefits from a 6 weeks rent free discount.

**Description**



**Situation**



Furnished/unfurnished

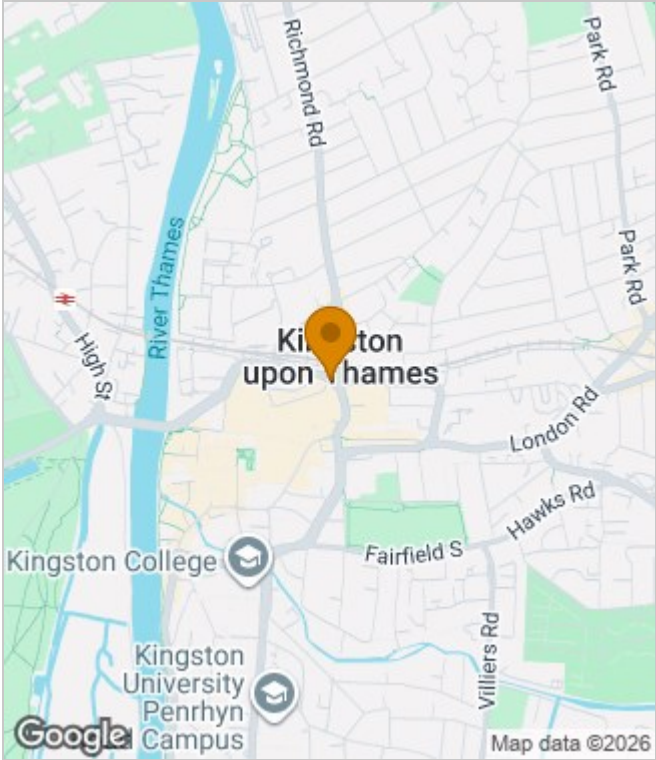
Council Tax Band:

Available:

**Floor Plans**



**Area Map**



**Energy Performance Graph**

Energy Efficiency Rating		Current	Potential
Very energy efficient - lower running costs			
(92 plus) <b>A</b>		91	91
(81-91) <b>B</b>			
(69-80) <b>C</b>			
(55-68) <b>D</b>			
(39-54) <b>E</b>			
(21-38) <b>F</b>			
(1-20) <b>G</b>			
Not energy efficient - higher running costs			
<b>England &amp; Wales</b>		EU Directive 2002/91/EC	

These particulars, whilst believed to be accurate are set out as a general outline only for guidance and do not constitute any part of an offer or contract. Intending purchasers should not rely on them as statements of representation of fact, but must satisfy themselves by inspection or otherwise as to their accuracy. No person in this firm's employment has the authority to make or give any representation or warranty in respect of the property.